

Dorland Gardens, Totton, Southampton, Hampshire SO40



4



2



1



Modern Link Detached home - Four Bedrooms - Annexe Potential -  
Lovely Garden Room - No Onward Chain - Excellent Location for  
Schooling - Spacious Rear Garden - Ample Parking

## Your New Home...

A unique and lovely home set in the heart of Totton, with excellent amenities on your doorstep as well as a short cycle, drive or walk to the historic New Forest. The property is within the catchment of Hazelwood Infant School and Houndsdown School both rated Excellent by OFSTED. The Home has four bedrooms which can be separated and the fourth used as a separate, self-contained annexe. The third bedroom works well as either a small bedroom or an office so there really are lots of options. The garden is private and enclosed with side access and ample parking for a number of cars to the front of the property. No onward Chain, Virtual viewing available on request.

Location

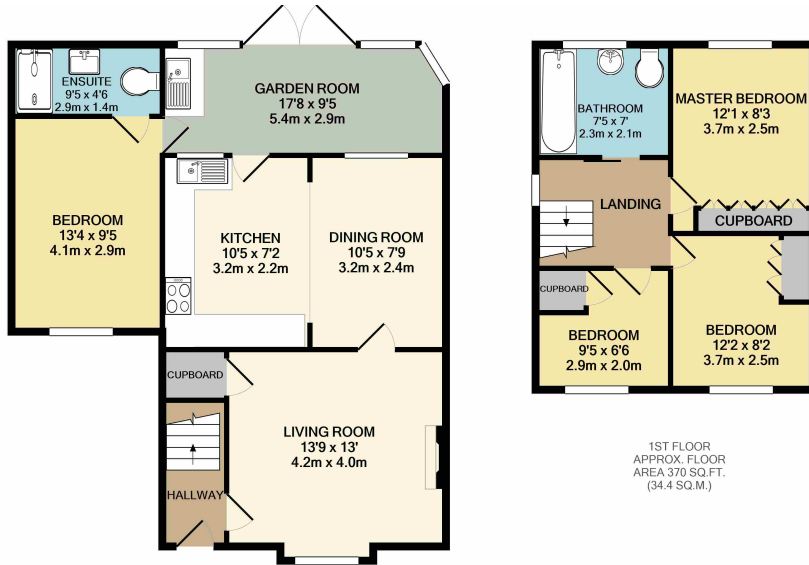
Local Schools

Information





# The Floorplan



GROUND FLOOR  
APPROX. FLOOR AREA 721 SQ.FT. (67.0 SQ.M.)

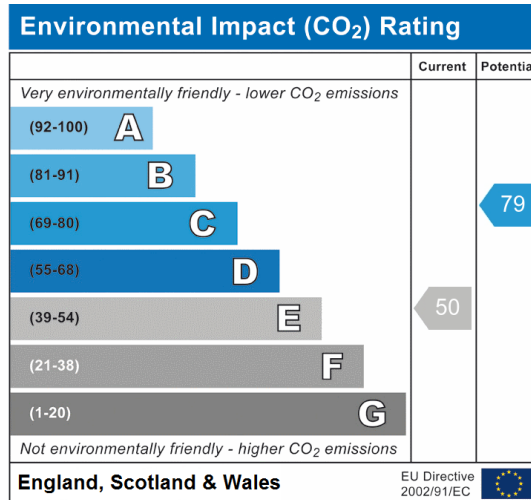
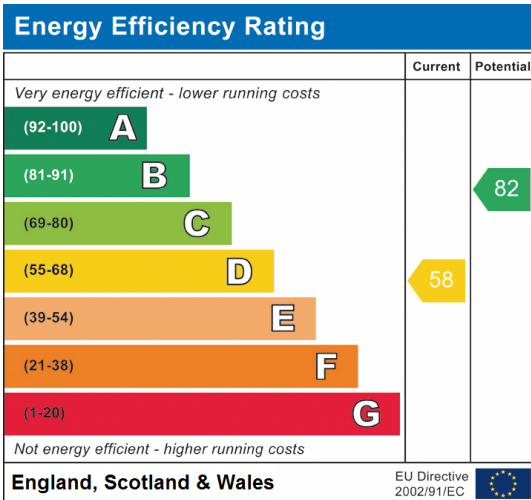
1ST FLOOR  
APPROX. FLOOR AREA 370 SQ.FT. (34.4 SQ.M.)

TOTAL APPROX. FLOOR AREA 1092 SQ.FT. (101.4 SQ.M.)

Whilst every attempt has been made to ensure the accuracy of the floor plan contained here, measurements of doors, windows, rooms and any other items are approximate and no responsibility is taken for any error, omission, or mis-statement. This plan is for illustrative purposes only and should be used as such by any prospective purchaser. The services, systems and appliances shown have not been tested and no guarantee as to their operability or efficiency can be given

Made with Metropix ©2020

# And EPC



We're **Spotlight**, we sell homes, not houses. Talk to us on **02380 18 19 20** about selling your current one, or finding your next one.